

7

6

5

4

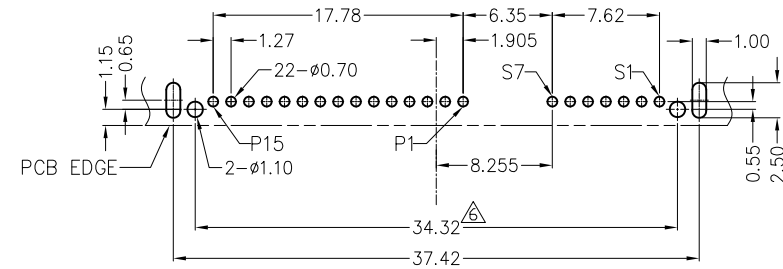
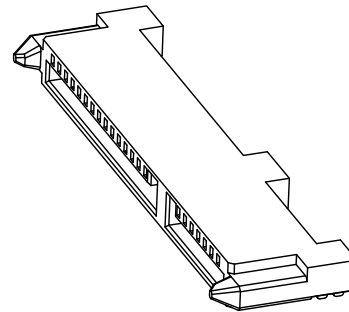
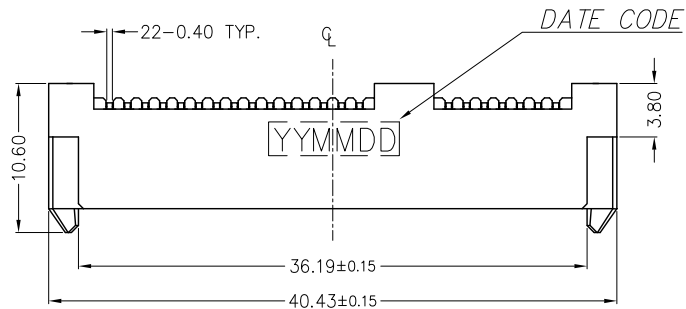
3

2

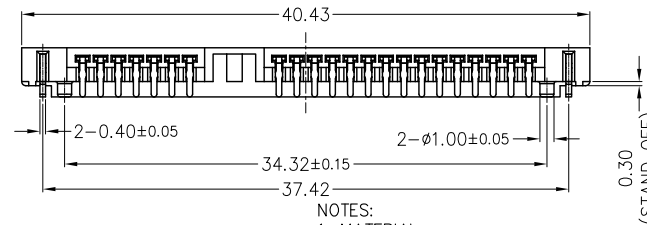
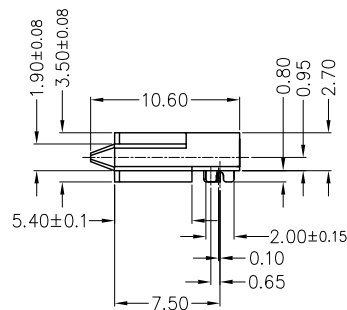
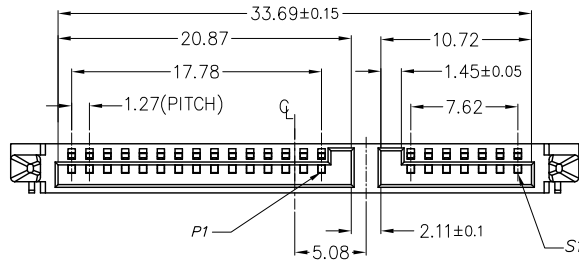
1

REVISIONS

REV	DESCRIPTION	DWN	DATE
6	PROPOSAL	E DEN	2015-07-07

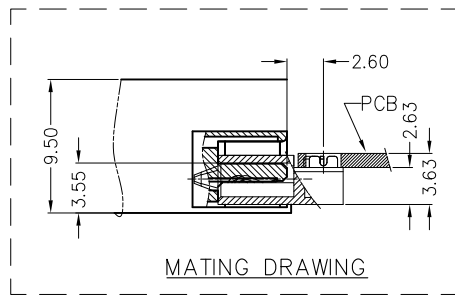


RECOMMENDED PCB LAYOUT (TOP VIEW)
GENERAL TOLERANCES: ±0.03 (t=1.0)

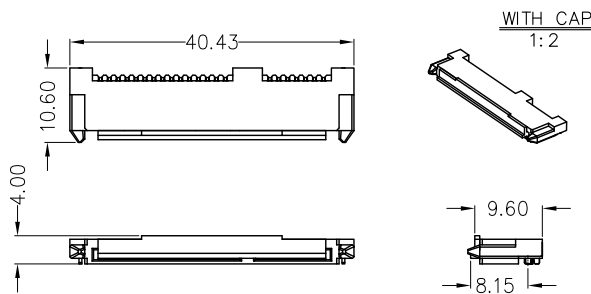


NOTES:

- MATERIAL:
 - HOUSING\CAP: THERMOPLASTIC HIGH TEMP(LCP S475), WITH G/F UL94 V-0, COLOR: BLACK.
 - CONTACT: PHOSPHOR BRONZE.
 - FORK: BRASS.
- PLATING:
 - CONTACT: Au PLATED ON CONTACT AREA, SEE NOTE4, 100u" MATTE-TIN ON SOLDERING TAILS, 50u" NICKEL UNDERPLATING OVER ALL.
 - FORK: 100u" MATTE-TIN ON SOLDERING TAILS, 50u" NICKEL UNDERPLATING OVER ALL.
- DATE CODE: YY(YEAR),MM(MONTH),DD(DATE).
- PART LEGEND: STA-007-1C22HX
 - AL-PLATED ON CONTACT AREA
 - G : GOLD FLASH
 - 2 : Au:10u"
 - 6 : Au:30u"



MATING DRAWING



GENERAL TOLERANCES (OTHERWISE SPECIFIED)	SCALE 1 : 1	DESIGN UNITS MILIMETER
4 PLS ±	DRAWN BY EDEN	DATE 2015-07-07
3 PLS ±	CHECKED BY	DATE
2 PLS ± 0.15	APPROVED BY	DATE
1 PLS ± 0.25		
ANGLES ± °	DRAWING NO. SD-STA007-001	PART NO. STA-007 SERIES
QUALITY SYMBOLS ▽=0	THIS DRAWING CONTAINS INFORMATION THAT IS PROPRIETARY TO VITECK CORP, LTD AND SHOULD NOT BE USED WITHOUT WRITTEN PERMISSION	



TITLE
SERIAL ATA RECEPTACLE STD 7+15PIN
DIP TYPE C\H OFFSET 0.93mm



DWG REV. 6	SHEET NO. 1 OF 1	SIZE
---------------	---------------------	------

7

6

5

4

3

2

1

7

6

5

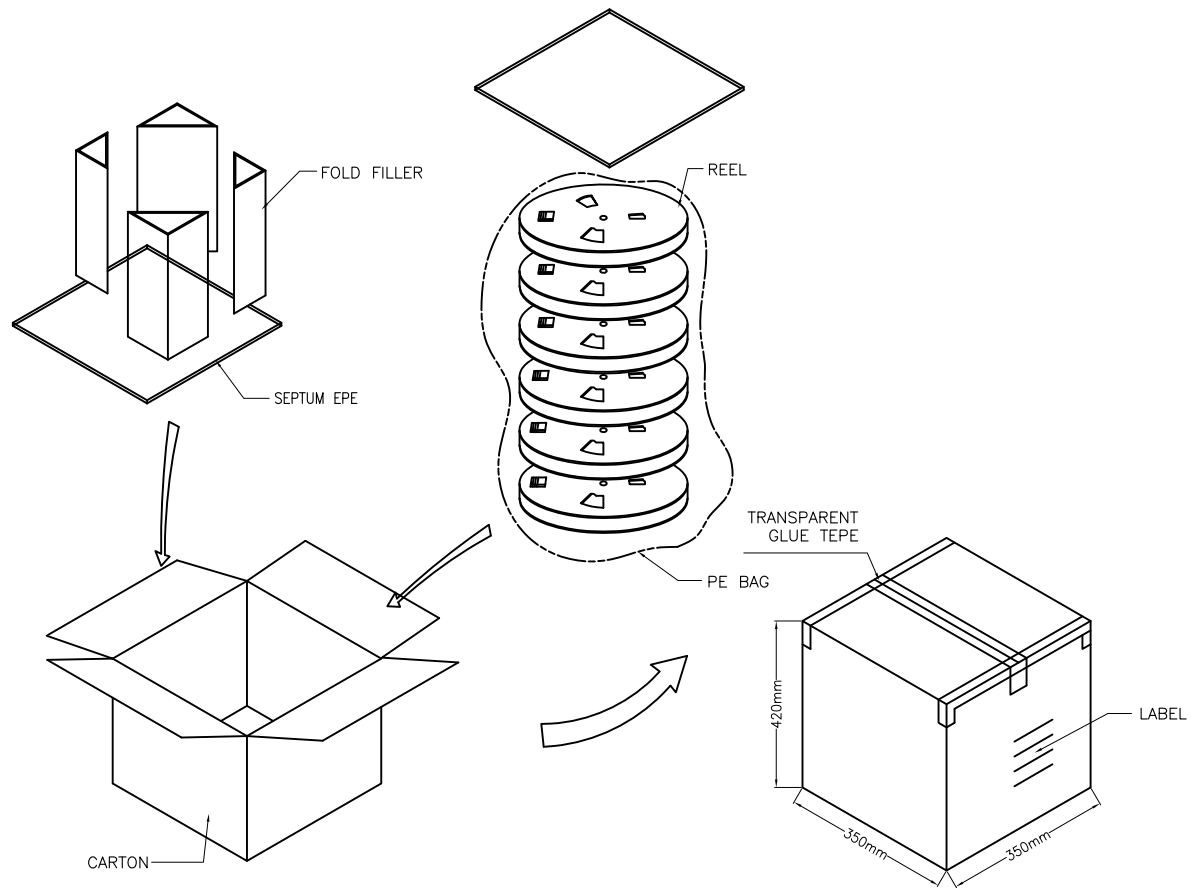
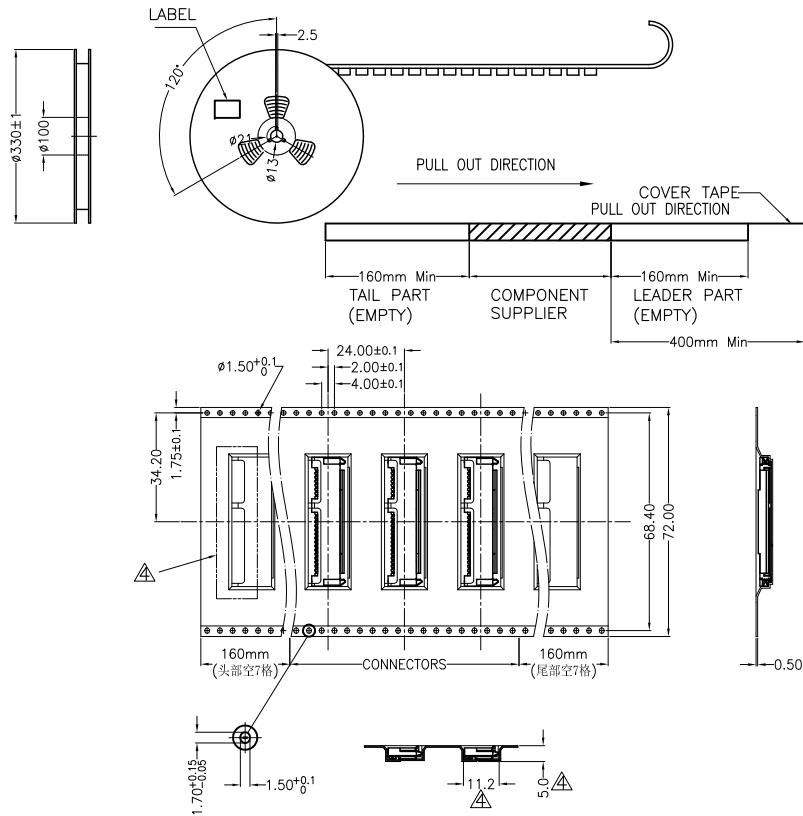
4

3

2

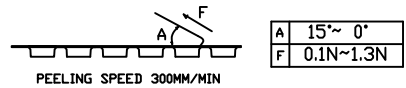
1

REVISIONS			
REV	DESCRIPTION	DWN	DATE
4	PROPOSAL	ALDO	2015-10-22



PRODUCT P/N	PARTS PER SHIPPING CARTON	PARTS PER REEL (S.P.Q.)	TOTAL REELS PER SHIPPING CARTON
STA-007 SERIES	3000(PCS)	600(PCS)	5

1. COVER TAPE PEELING FORCE:



2. PART DIMENSIONS MEET EIA-481-D REQUIREMENT

GENERAL TOLERANCES (OTHERWISE SPECIFIED)	SCALE	DESIGN UNITS
\pm mm	1 : 1	MILIMETER
4 PLS \pm	DRAWN BY ALDO	DATE 2015-10-22
3 PLS \pm	CHECKED BY	DATE
2 PLS ± 0.20	APPROVED BY	DATE
1 PLS ± 0.25	DRAWING NO. PK-STA007-001	PART NO. STA-007 SERIES
ANGLES \pm °		
QUALITY SYMBOLS $\nabla \sqrt{0}$		



TITLE SERIAL ATA RECEPTACLE STD 7+15PIN
DIP TYPE C\H OFFSET 0.93mm

THIS DRAWING CONTAINS INFORMATION THAT IS PROPRIETARY TO VITECK CORP, LTD AND SHOULD NOT BE USED WITHOUT WRITTEN PERMISSION

THIRD ANGLE PROJECTION	DWG REV. 4	SHEET NO. 1 OF 1	SIZE
------------------------	------------	------------------	------

7

6

5

4

3

2

1