

7

6

5

4

3

2

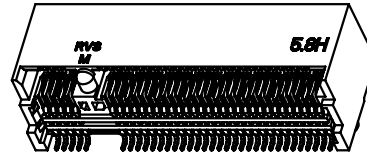
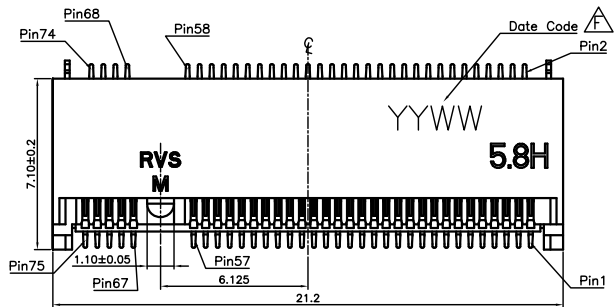
1

REVISIONS			
REV	DESCRIPTION	DWN	DATE
E	MODIFY HOUSING	JACK WU	2016-12-19
F	UPDATE DATE CODE	KELLY	2018-10-15

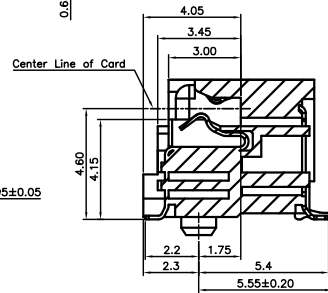
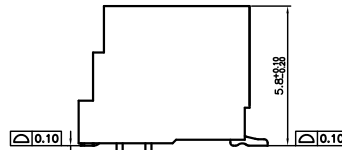
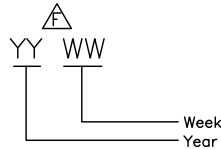
Notes:

- Materials
  - Housing: LCP+30% GF,UL94 V-0; Black Color
  - Contact: Phosphor bronze T=0.15mm, Gold Plating at mating area, 100u" Min. Matte Tin plating at solder tail, all over Nickel(50u" Min.);
  - LEG: Brass T=0.20mm, 100u" Min. Matte Tin plating over all, all over nickel(50u" Min.).
- RoHS 2.0 and HF compliant;
- Ratings
  - Voltage Rating: 50V AC (Per pin);
  - Current Rating: 0.5A (Per pin);
  - Operating Temperature: -40°C ~ 80°C;
- Electrical Requirement:
  - LLCR: 55mΩ Max.(Initial), 20mΩ Max. change allowed(Final);
  - Dielectric Withstanding Voltage: 300V AC (RMS) for 1 minute;
  - Insulation Resistance: 500MΩ Min. @ 500V DC;
- Mechanical Requirement:
  - Mating Force: 20N Max.;
  - Unmating Force: 20N Max.;
  - Durability: 60 Cycles;
  - Vibration: No electrical discontinuity greater than 1u sec shall occur;
  - Mechanical Shock: 285G half sine / 6 axis, No electrical discontinuity greater than 1u sec shall occur;
- Resistance to heat: the temperature shall be 260±5°C 10±1 seconds.
- Part Number: M2N-018-1X67HX
 

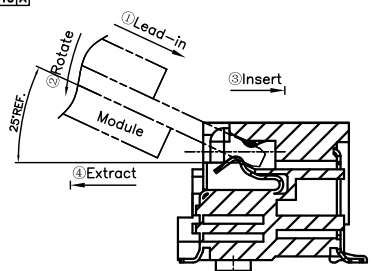
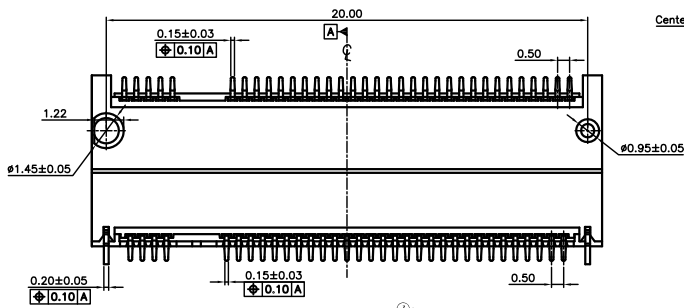
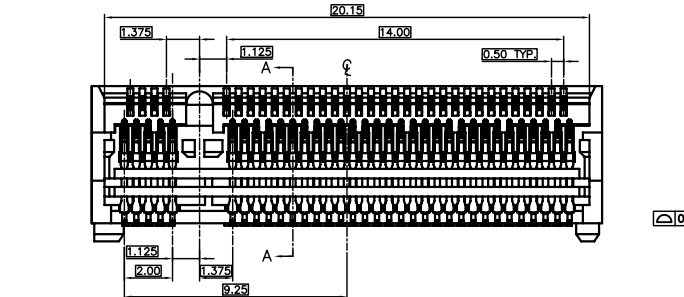
Key Type	Plating on contact area:
M: KEY M	G: Gold Flash
	2: 10u" Gold



3D VIEW



SECTION A-A



How to mate and unmate  
 Mate: ① - ② - ③  
 Unmate: ④

GENERAL TOLERANCES (OTHERWISE SPECIFIED)		SCALE NONE	DESIGN UNITS MILIMETER	
4 PLS	±	DRAWN BY KELLY	DATE 2018-10-15	
3 PLS	±	CHECKED BY	DATE	NGFF Socket (M.2 Connector) H=5.8H, RVS Key M
2 PLS	± 0.25	APPROVED BY	DATE	
1 PLS	± 0.30			
ANGLES	± °	DRAWING NO. SD-M2N018-00M	DATE	PART NO. M2N-018-1X67HX
QUALITY SYMBOLS		THIS DRAWING CONTAINS INFORMATION THAT IS PROPRIETARY TO VITECK CORP., LTD AND SHOULD NOT BE USED WITHOUT WRITTEN PERMISSION		THIRD ANGLE PROJECTION
		DWG REV. F	SHEET NO. 1 OF 2	SIZE

7

6

5

4

3

2

1

7

6

5

4

3

2

1

E

E

D

D

C

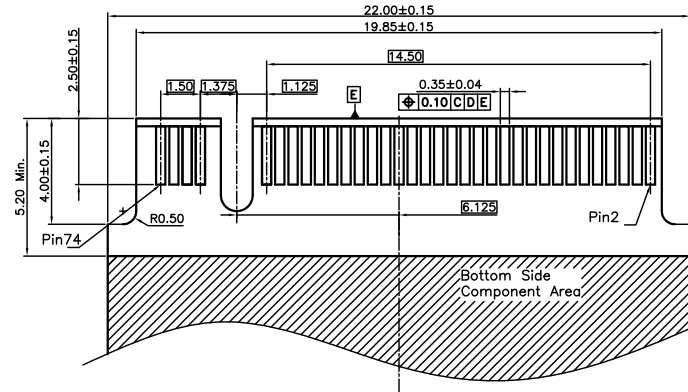
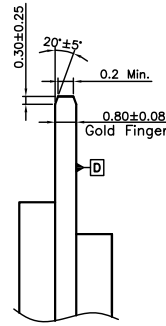
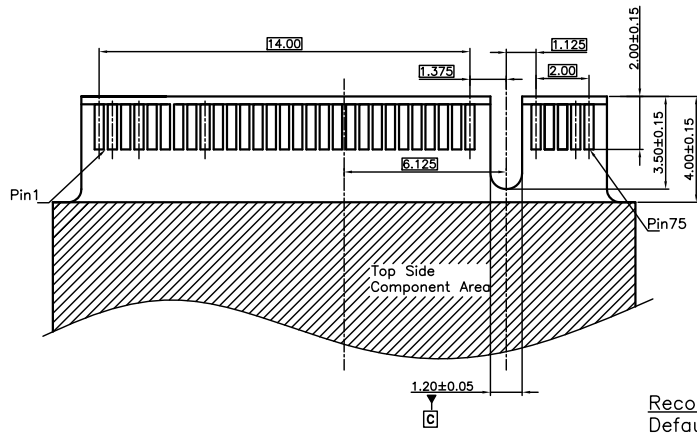
C

B

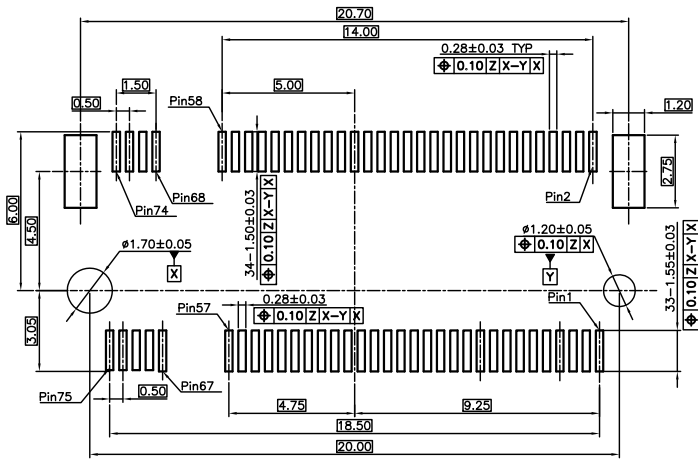
B

A

A



Recommended Mould Finger Layout  
Default Tolerance ±0.05



Recommended PCB Layout (Top View)  
Default Tolerance ±0.05

GENERAL TOLERANCES (OTHERWISE SPECIFIED)		SCALE	DESIGN UNITS				
4 PLS ±		NONE	MILIMETER				
3 PLS ±		DRAWN BY	DATE	TITLE NGFF Socket (M.2 Connector) H=5.8H, RVS Key M			
2 PLS ± 0.25		KELLY	2018-10-15				
1 PLS ± 0.30		CHECKED BY	DATE				
ANGLES ± °		APPROVED BY	DATE	PART NO. M2N-018-1X67HX			
QUALITY SYMBOLS		DRAWING NO.	SD-M2N018-00M				
THIS DRAWING CONTAINS INFORMATION THAT IS PROPRIETARY TO VITECK CORP., LTD AND SHOULD NOT BE USED WITHOUT WRITTEN PERMISSION				THIRD ANGLE PROJECTION	DWG. REV. F	SHEET NO. 2 OF 2	SIZE

7

6

5

4

3

2

1

7

6

5

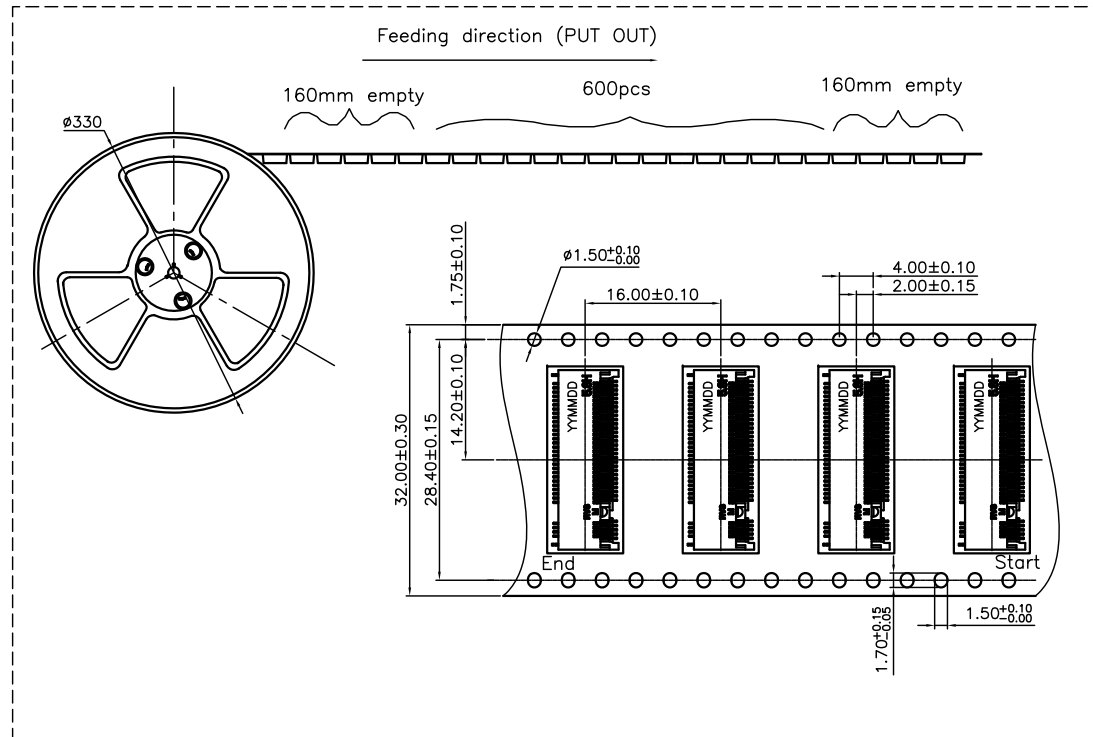
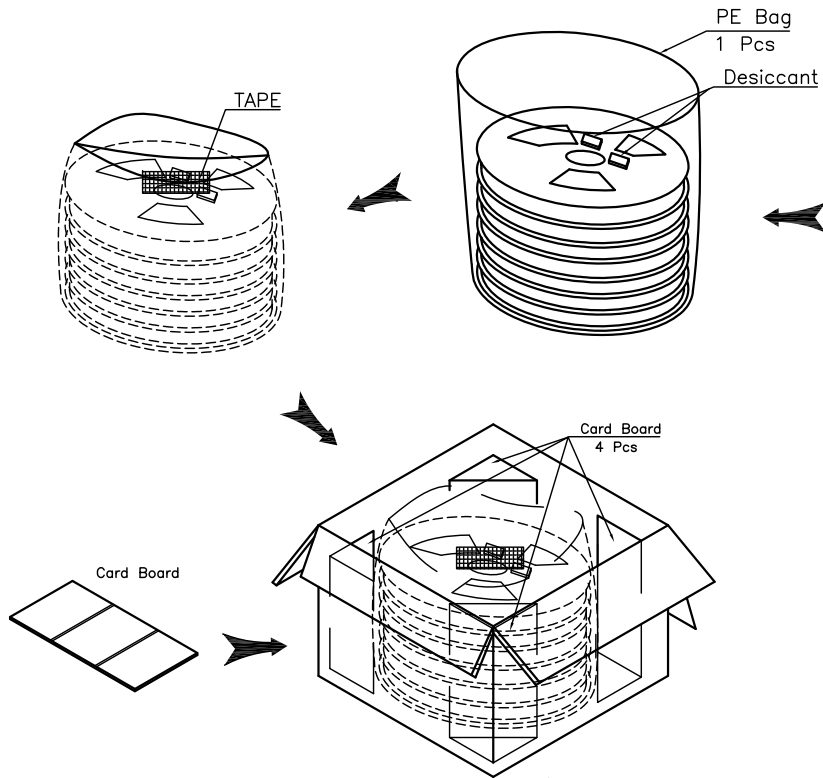
4

3

2

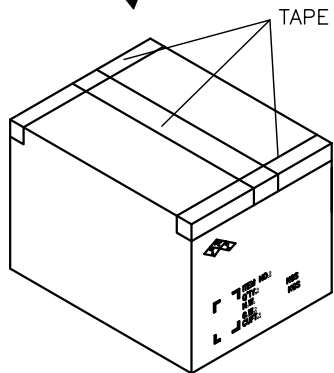
1

REVISIONS			
REV	DESCRIPTION	DWN	DATE
B	MODIFY DIM.	JACK WU	2016-12-09
C	FIX QUANTITY	JACK WU	2017-04-25



- Notes:
1. Peel off force of top tape: 0.1~1.3N;
  2. 600 pcs/reel, 6000 pcs/carton.

600	4	6000
PCS/REEL	REELS/BOX	PCS/BOX



GENERAL TOLERANCES (OTHERWISE SPECIFIED)		SCALE	DESIGN UNITS	<b>VITECK CO., LTD.</b>	
mm		NONE	MILIMETER		
4 PLS	±	DRAWN BY	DATE	TITLE NGFF Socket (M.2 Connector) H=5.8H, RVS Key M PACKING	
3 PLS	±	JACK WU	2016-12-09		
2 PLS	±	CHECKED BY	DATE		
1 PLS	±	APPROVED BY	DATE		
ANGLES	± °	DRAWING NO.	DATE	PART NO. M2N-018-1X67HX	
QUALITY SYMBOLS	▽=0	PK-M2N018-00X			
THIS DRAWING CONTAINS INFORMATION THAT IS PROPRIETARY TO VITECK CORP., LTD AND SHOULD NOT BE USED WITHOUT WRITTEN PERMISSION				THIRD ANGLE PROJECTION	
			DWG REV.	SHEET NO.	SIZE
			C	1 OF 1	

7

6

5

4

3

2

1