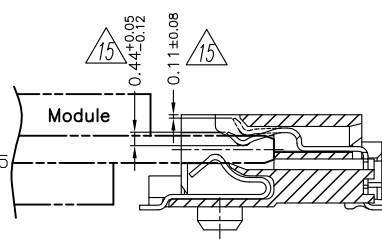
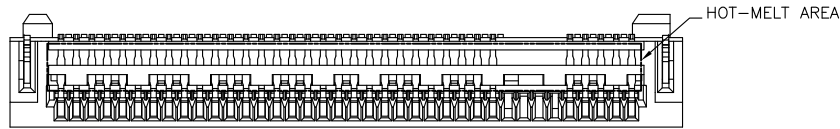


HALOGEN FREE

REVISIONS

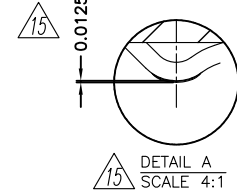
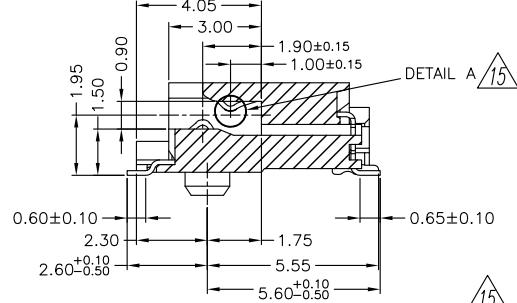
REV.	DESCRIPTION	DWN	DATE
14	MODIFY HOLDDOWN	JACK WU	2017-01-23
15	ADD DETAIL A	JACK WU	2017-05-12



NOTES:

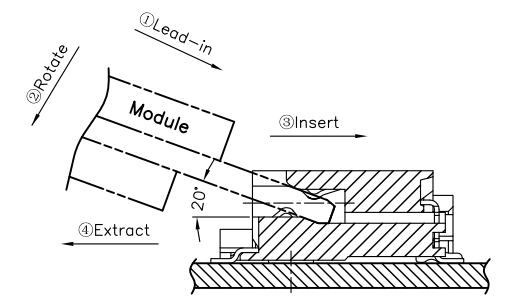
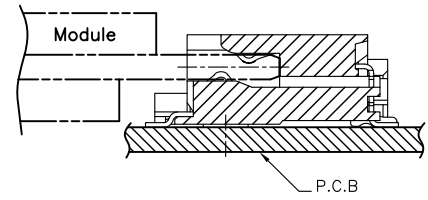
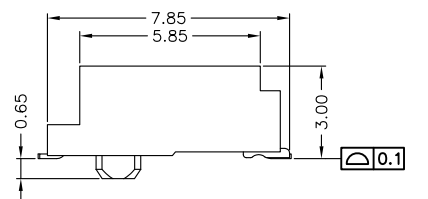
- MATERIAL:
 - HOUSING: HIGH TEMP. THERMAL PLASTIC (LCP), GLASS FIBER FILLED, UL94V-0, COLOR:BLACK.
 - CONTACT: PHOSPHOR BRONZE.
 - FITTING NAIL: BRASS.
- PLATING:
 - CONTACT: Au PLATING ON CONTACT AREA, SEE NOTE 5, 100u"MIN. MATTE-TIN ON SOLDERING TAILS, 50u"MIN. NICKEL UNDERPLATING OVER ALL.
 - FITTING NAIL: 100u"MIN. MATTE-TIN PLATING OVER ALL.
- DATE CODE:YY(YEAR),MM(MONTH),DD(DATE).
- ROHS AND HALOGEN FREE COMPLIANT.
- PART NUMBER LEGEND:M2N-012-1X67HX

KEY LIST SEE NOTES 5

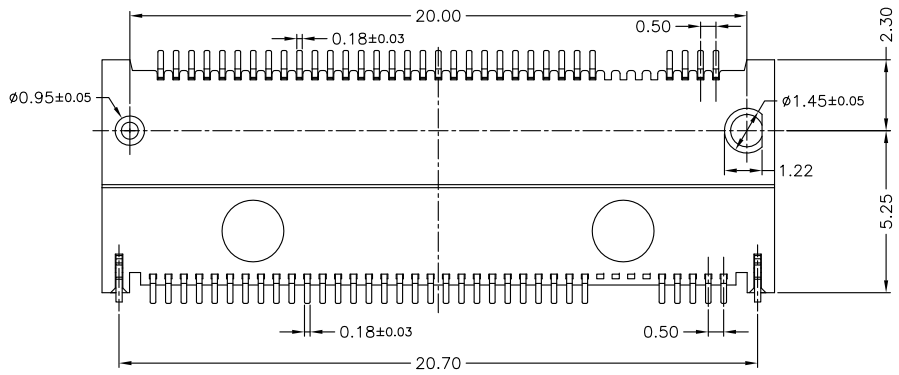
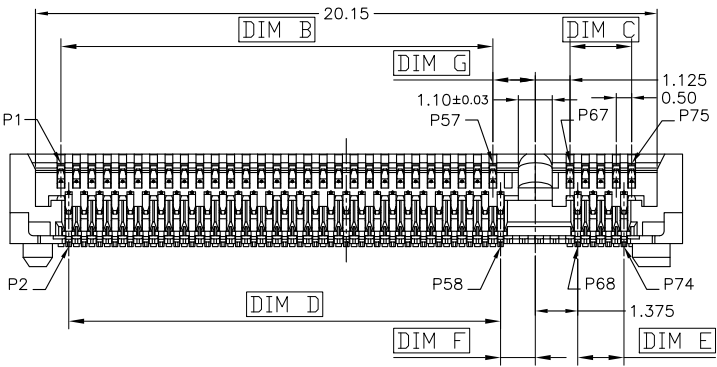
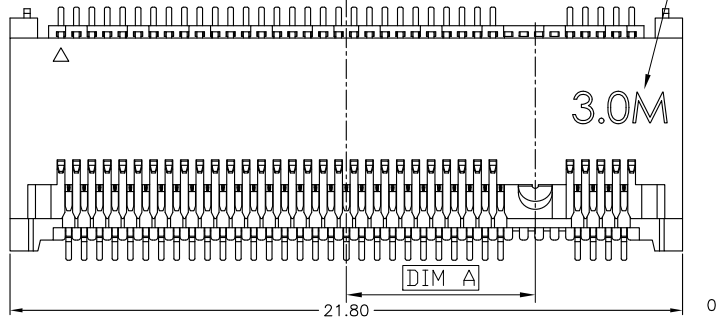


KEY TYPE
M: KEY M

PLATING OF CONTACT AREA.
G: GOLD FLASH
2: 10u" GLOD
3: 15u" GLOD
6: 30u" GLOD



How to mate and unmate
Mate: ①-②-③
Unmate: ④



GENERAL TOLERANCES (OTHERWISE SPECIFIED)		SCALE 4 : 1	DESIGN UNITS MILIMETER
4 PLS	±	RAWN BY JACK WU	DATE 2016-11-23
3 PLS	±	CHECKED BY	DATE
2 PLS	± 0.15	APPROVED BY	DATE
1 PLS	± 0.25		
ANGLES		±1°	
QUALITY SYMBOLS		DRAWING NO. SD-M2N012-00M	



TITLE
NGFF SOCKET (M.2 CONNECTOR)
STD TYPE, SMT, H=3.0 KEY M

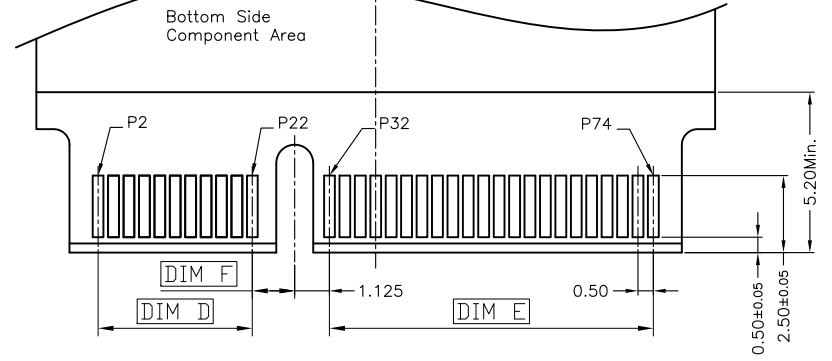
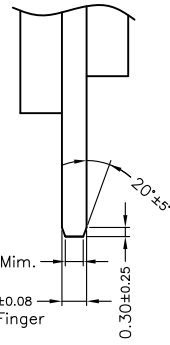
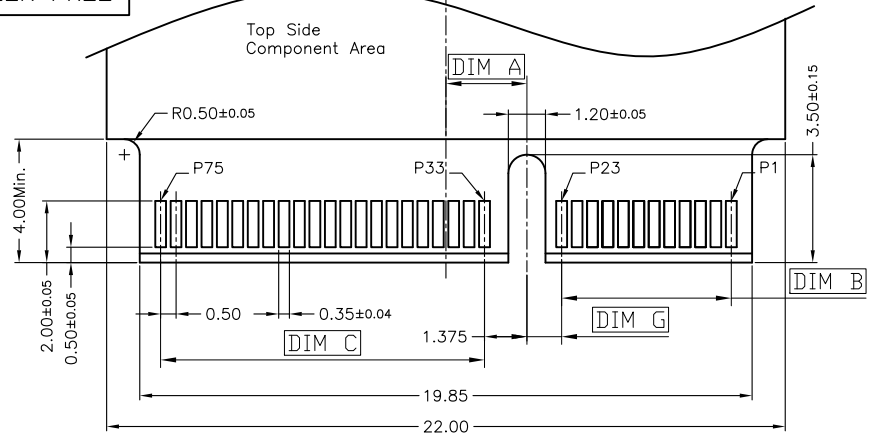
PART NO.
M2N-012 SERIES

THIS DRAWING CONTAINS INFORMATION THAT IS PROPRIETARY TO VITECK CORP, LTD AND SHOULD NOT BE USED WITHOUT WRITTEN PERMISSION

THIRD ANGLE PROJECTION	DWG REV. 15	SHEET NO. 1 of 2	SIZE F
------------------------	----------------	---------------------	-----------

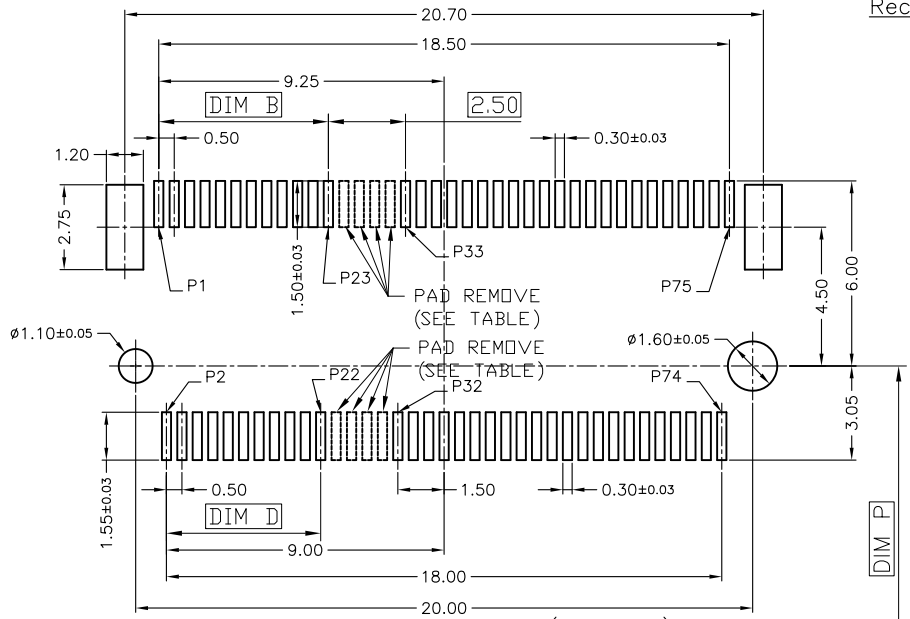
KEY M	-6.125	14.0	2.0	14.0	1.5	1.125	1.375
KEY NAME	DIM A	DIM B	DIM C	DIM D	DIM E	DIM F	DIM G

HALOGEN FREE

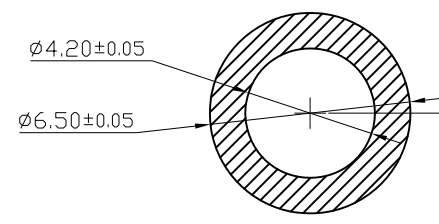


Recommended Mould Finger Layout
Default Tolerance ±0.05

2210	108.25
2280	78.25
2260	58.25
2242	40.25
2230	28.25
3042	40.25
3030	28.25
MODULE TYPE	
DIM P	



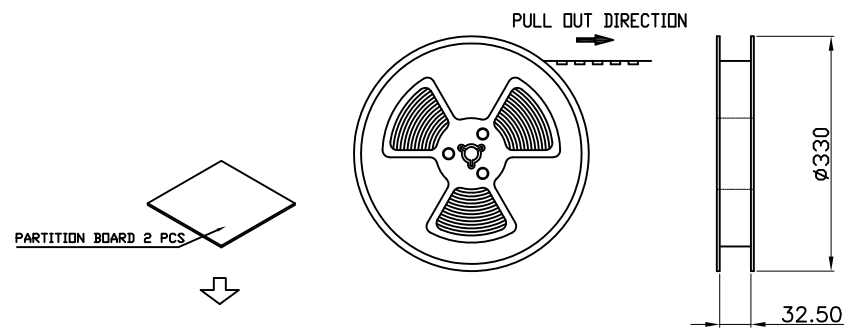
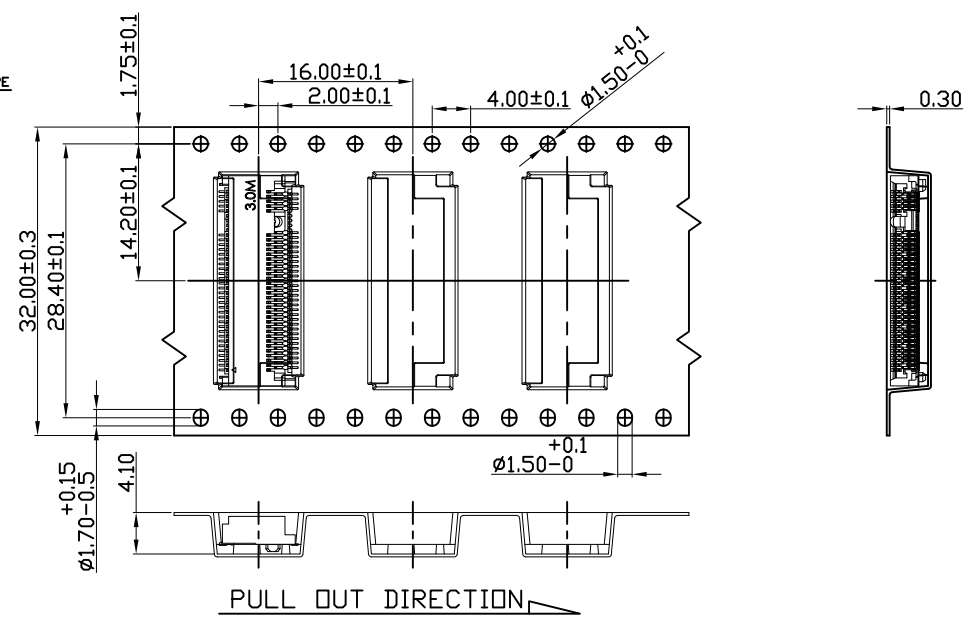
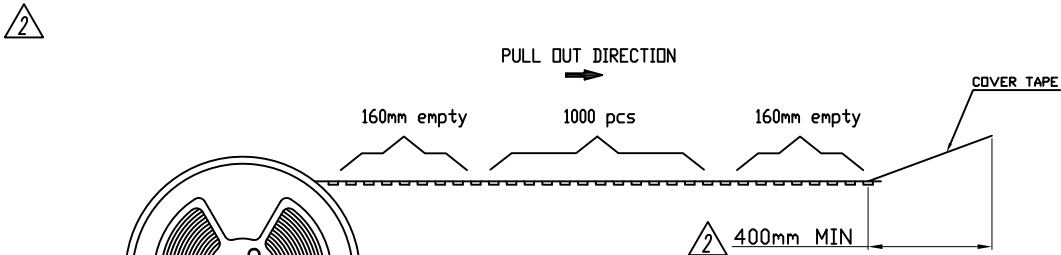
KEY ID	PAD REMOVED	DIM A	DIM B	DIM C	DIM D	DIM E	DIM F	DIM G
M	PIN 59-66	-6.125	14.0	2.0	14.0	1.5	1.125	1.375
L	PIN 55-62	-5.125	13.0	3.0	13.0	2.5	1.125	1.375
K	PIN 51-58	-4.125	12.0	4.0	12.0	3.5	1.125	1.375
J	PIN 47-54	-3.125	11.0	5.0	11.0	4.5	1.125	1.375
H	PIN 43-50	-2.125	10.0	6.0	10.0	5.5	1.125	1.375
G	PIN 39-46	-1.125	9.0	7.0	9.0	6.5	1.125	1.375
F	PIN 28-35	1.625	6.5	9.5	6.0	9.5	1.375	1.125
E	PIN 24-31	2.625	5.5	10.5	5.0	10.5	1.375	1.125
D	PIN 20-27	3.625	4.5	11.5	4.0	11.5	1.375	1.125
C	PIN 16-23	4.625	3.5	12.5	3.0	12.5	1.375	1.125
B	PIN 12-19	5.625	2.5	13.5	2.0	13.5	1.375	1.125
A	PIN 8-15	6.625	1.5	14.5	1.0	14.5	1.375	1.125



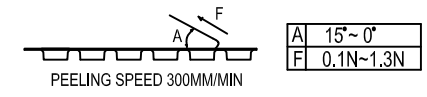
GENERAL TOLERANCES (OTHERWISE SPECIFIED)		SCALE 4 : 1	DIMENSIONS IN MILLIMETERS			
4 PLS	±	RAWN BY JACK WU	DATE 2016-11-23		TITLE NGFF SOCKET (M.2 CONNECTOR) STD TYPE, SMT, H=3.0 KEY M	
3 PLS	±	CHECKED BY	DATE			
2 PLS	± 0.15	APPROVED BY	DATE			
1 PLS	± 0.25	DRAWING NO. SD-M2N012-00M		PART NO. M2N-012 SERIES		
ANGLES ±1°		QUALITY SYMBOLS $\nabla = 0$		THIRD ANGLE PROJECTION		DWG REV. 15
THIS DRAWING CONTAINS INFORMATION THAT IS PROPRIETARY TO VITECK CORP, LTD AND SHOULD NOT BE USED WITHOUT WRITTEN PERMISSION				SHEET NO. 2 of 2		SIZE F

PRODUCT P/N	PARTS PER SHIPPING CARTON	PARTS PER REEL (S.P.Q.)	TOTAL REELS PER SHIPPING CARTON	Carton
M2N-012-1M67HX	6000(PCS)	1000(PCS)	6	375mm(L)X365mm(W)X265mm(H)

REVISIONS			
REV.	DESCRIPTION	DWN	DATE
1	RELEASE	CC.LU	2015-08-18
2	MODIFY DRAWING	JACK WU	2016-08-15



- NOTES:
- 10 SPROCKET HOLE PITCH CUMULATIVE TOLERANCE ± 0.20 .
 - CARRIER CAMBER IS WITHIN 1 mm IN 250 mm.
 - MATERIAL : BLACK CONDUCTIVE POLYSTYRENE ALLOY.(UP-5000)
 - ALL DIMENSIONS MEET EIA-481-C REQUIREMENTS.
 - THICKNESS : 0.50 ± 0.05 mm.
 - COVER TAPE PEELING FORCE:



GENERAL TOLERANCES (OTHERWISE SPECIFIED)		SCALE 1 : 1	DESIGN UNITS MILIMETER		TITLE NGFF SOCKET (M.2 CONNECTOR) STD TYPE, SMT, H=3.0
4 PLS	\pm	RAWN BY JACK WU	DATE 2016-08-15		
3 PLS	\pm	CHECKED BY	DATE		
2 PLS	± 0.10	APPROVED BY	DATE		
1 PLS	± 0.15				
ANGLES $\pm 1^\circ$		DRAWING NO. PK-M2N012-00M		THIRD ANGLE PROJECTION DWG REV. 2 SHEET NO. 1 of 1 SIZE F	
QUALITY SYMBOLS $\nabla C = 0$		THIS DRAWING CONTAINS INFORMATION THAT IS PROPRIETARY TO VITECK CORP, LTD AND SHOULD NOT BE USED WITHOUT WRITTEN PERMISSION			